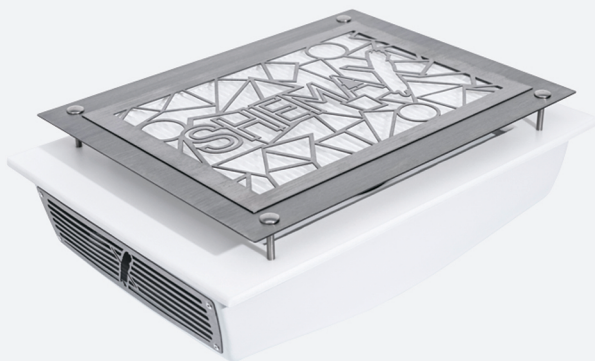


# SPECYFIKACJE MODELE POCHŁANIACZY SHEMAX

## SMART V-PRO



220 V

50 Hz

DC-099 5,5x2,5

Power Supply 3A

3,25 kg

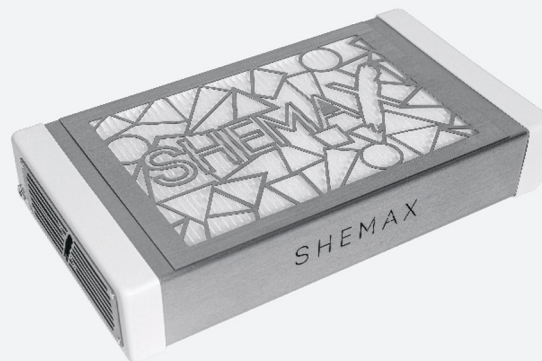
35x21x10 cm

1 centrifugal motor

60W

4.4 m/s

## STYLE PRO



220 V

50 Hz

DC-099 5,5x2,5

Power Supply 3A

2,3 kg

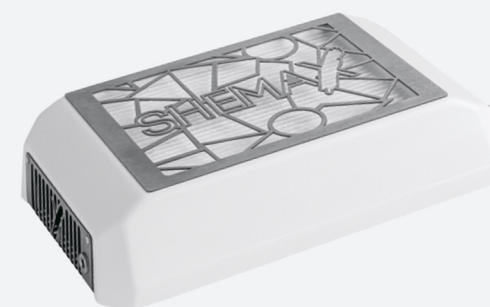
36x20x7,4 cm

2 centrifugal motors

54W

3,7 m/s

## STYLE XS



220 V

50 Hz

DC-099 5,5x2,5

Power Supply 3A

0,818 kg

27,5x17,8x7 cm

1 centrifugal motor

27W

3,2 m/s